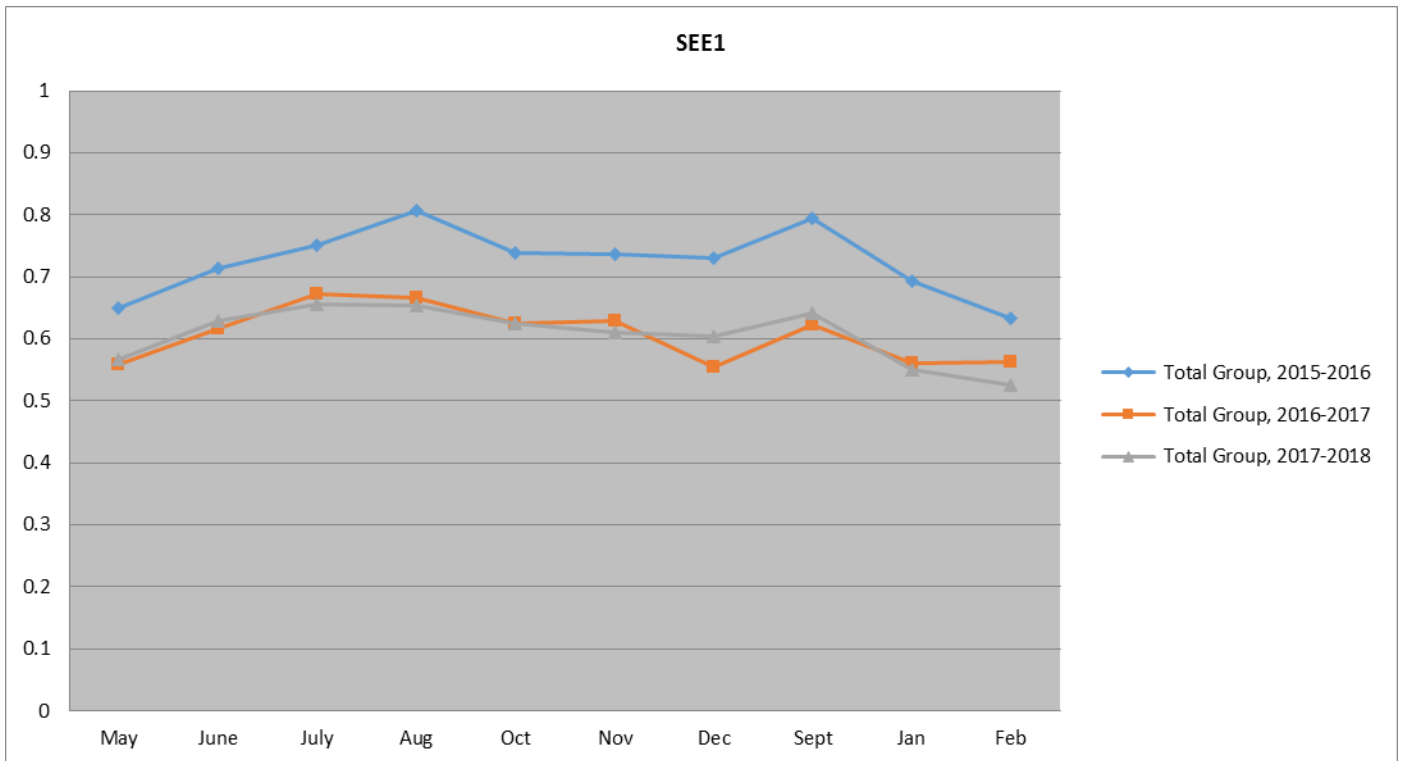


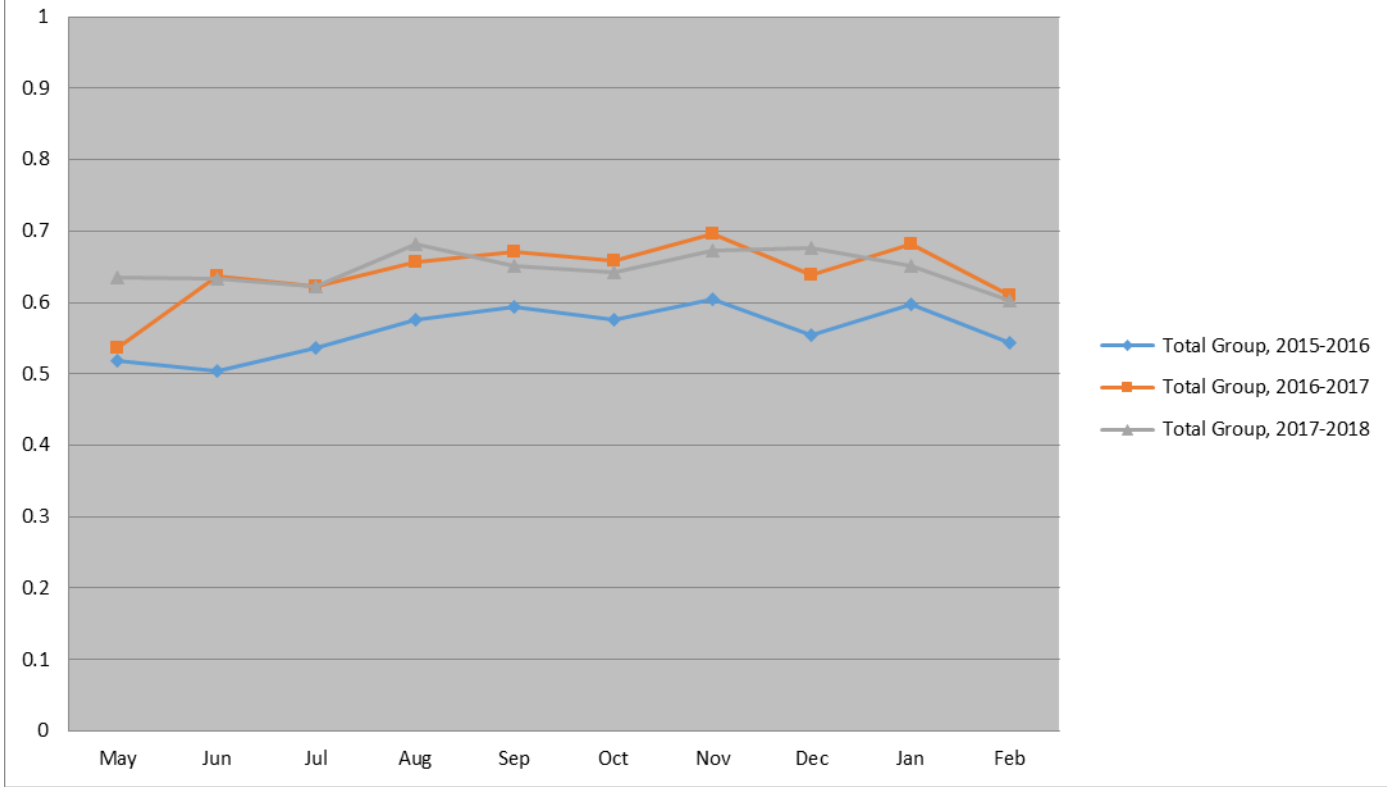
Results Reported for Special Enrollment Examinations

Candidates for the Enrolled Agent credential have different options relative to the three tests: Part/Test 1 Individuals; Part/Test 2 Businesses; Part/Test 3 Representation, Practices and Procedures. Not all candidates take all three tests, and the individual tests are not necessarily taken in specific order. The result of these options is that the composition of the candidate populations for each of the three tests is very different. It is important to understand that comparison of pass rates among the three tests is not appropriate. The differences in the tests and the composition of the test taking populations make comparison impossible. For example, the total number of test takers for SEE 1 is nearly twice the number of candidates taking either SEE 2 or SEE 3.

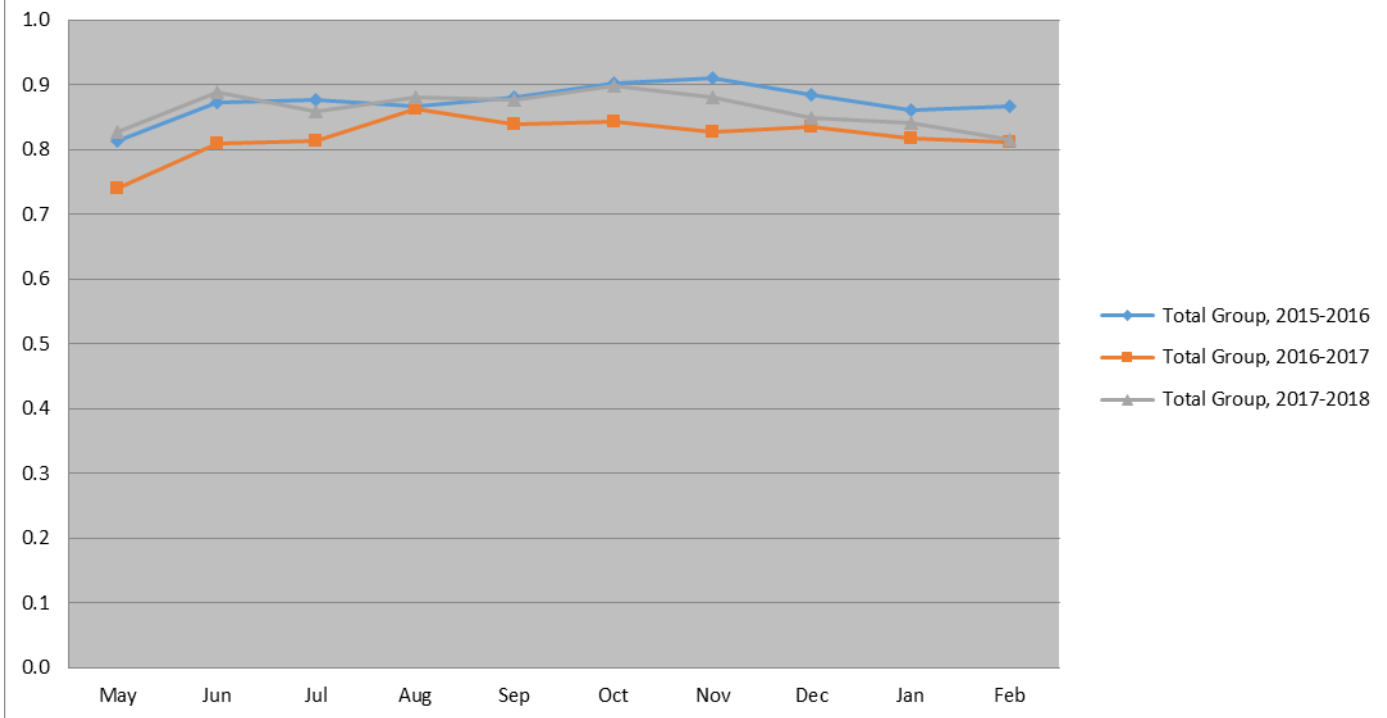
The charts below show the pass rates by month for 2016, 2017 and 2018. These charts will be updated in March.



SEE 2



SEE 3



SEE Yearly Pass Rates

