

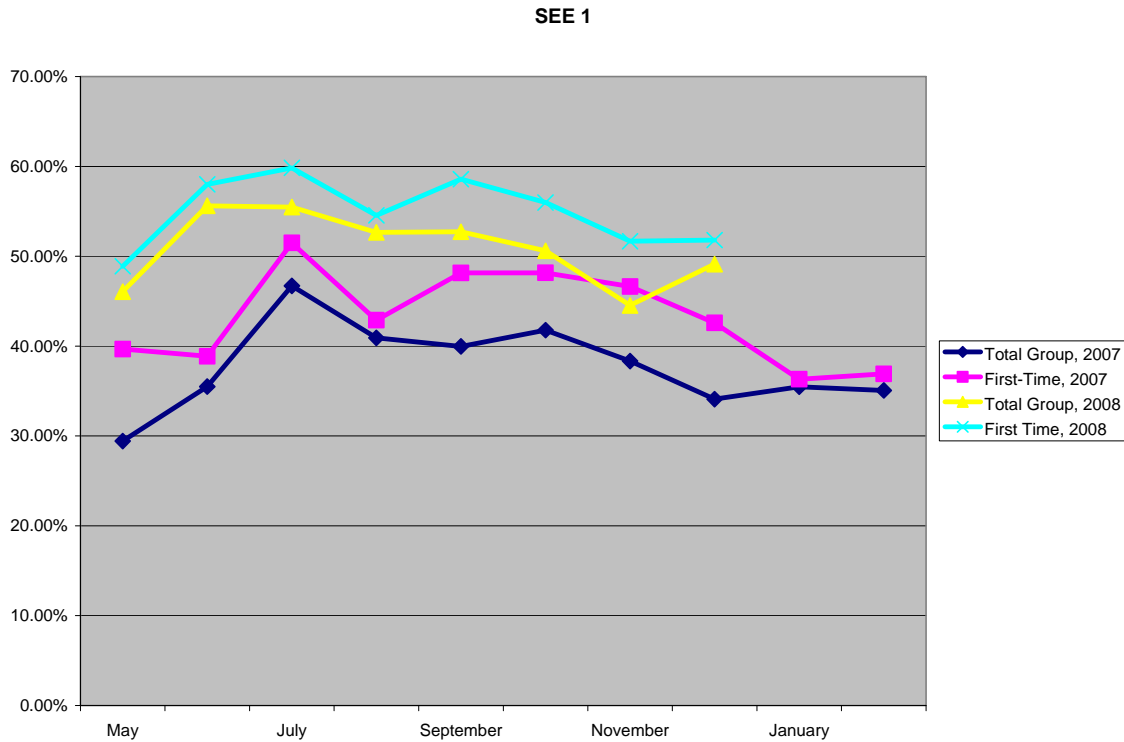
Results Reported for 2007 and 2008 Special Enrolled Examinations

Candidates for the Enrolled Agent credential experienced several changes to the examination process beginning in 2006. A formal job analysis that included more than 1000 survey responses resulted in test specifications for three examinations: Part 1-Individuals; Part 2-Businesses; Part 3-Representation, Practices and Procedures. Tests were administered by computer in Prometric test centers throughout the United States and internationally.

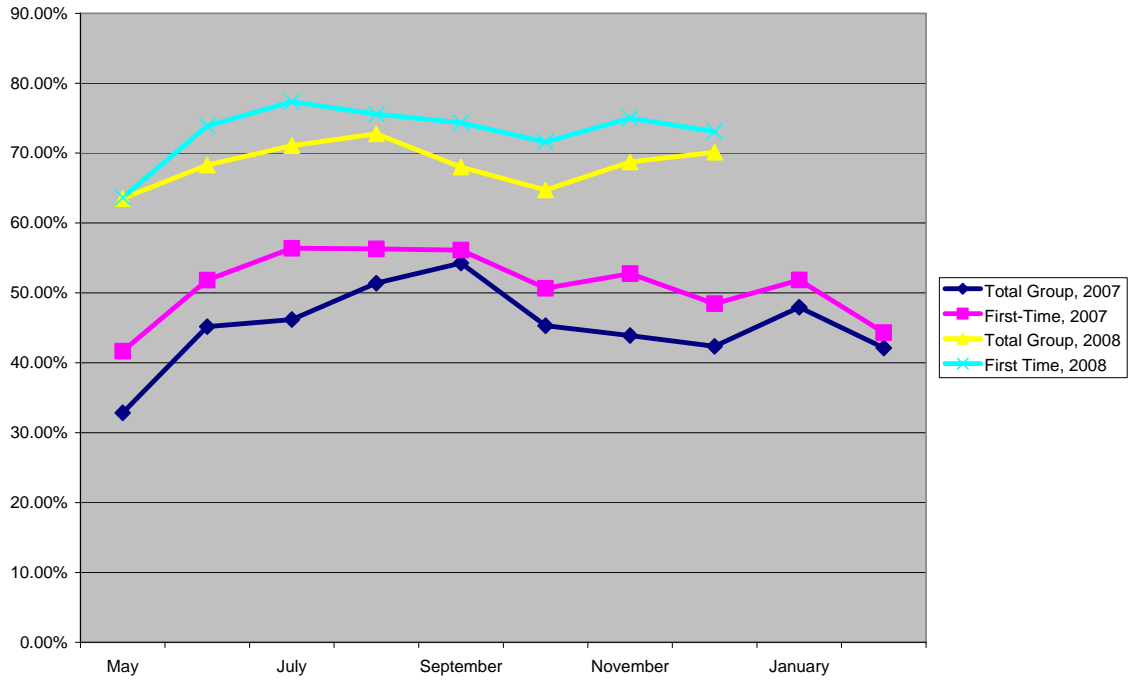
The use of computer delivery and individual appointments provided candidates with different options. The result of these options is that the composition of the candidate populations for each of the three parts is very different.

It is important to understand that comparison of pass rates among the three tests is not appropriate. The differences in the tests and the composition of the test taking populations make comparison impossible. For example, the total number of test takers for SEE 1 is nearly twice the number of candidates taking either SEE 2 or SEE 3 year-to-date in 2008. It is also important to note that first-time test takers tend to perform better than the total group. It is likely that candidates in 2008 are better informed about the content of the three examinations as the information on the changes has been updated.

The charts below show the pass rates by month for 2007 and 2008. These charts will be updated in March.



SEE 2



SEE 3

